



Installation Guide

Cimatron 16



Contents

Hardware Requirements	1
Memory (RAM) / processor & graphics card	1
Peripheral devices.....	1
Software Requirements.....	2
Installation Privileges.....	3
Installation Procedure.....	3
Installation Stages.....	9
Installation Layout.....	10
Catalogs	12
Installation Scenarios.....	13
Preserving User Data from a Previous Version	14
Cimatron data files (user-customized)	14
User-created data files.....	17

Hardware Requirements

The hardware requirements for installing Cimatron are as follows.

Memory (RAM) / processor & graphics card

Requirement	Memory (RAM) / Processor ¹	Graphics Card ²
Minimum	16 GB RAM, 4 Cores i7 CPU	2 GB
Recommended	64 GB RAM, 10 Cores i9 CPU	4 GB

- 1** To gain better I/O performance, it is recommended to use a solid state hard drive (SSD). Windows and Cimatron should be installed on the SSD. The file management should be configured on a different hard drive, local or network based.
- 2** Quadro cards from Nvidia and FirePro, and Radeon Pro cards from AMD, are the most recommended cards for CAD/CAM software.

The performance of graphics cards is closely related to driver version and memory size. The newer the driver and the greater the memory, the better the graphics card's performance.

The graphics card must support OpenGL 3.3. For recommended graphics cards, see the following website: <https://cimgraphics.cimatron.com/>.

Peripheral devices

A 3-button mouse is highly recommended for use with Cimatron to optimize software navigation and functionality.

Software Requirements

The software requirements for Cimatron are detailed below.

Requirement	Operating System / Framework
Recommended	<ul style="list-style-type: none">▪ Windows Server 2012 R2, 2016, or 2019▪ Windows 10 Professional
Works On	<ul style="list-style-type: none">▪ Windows 11
Not Supported	<ul style="list-style-type: none">▪ Windows 7, 8, 8.1, and Windows Server 2008 are no longer supported; however, the system will still run on these operating systems.▪ Windows versions older than Windows 7 are not supported.
Prerequisite	<ul style="list-style-type: none">▪ .NET Framework 4.6.2 is an installation prerequisite. If .NET is not installed, it will be automatically installed during the Cimatron installation process.

Installation Privileges

Only users that are logged in as Administrators can install Cimatron.

Installation Procedure

Prepare your computer for installation as follows.

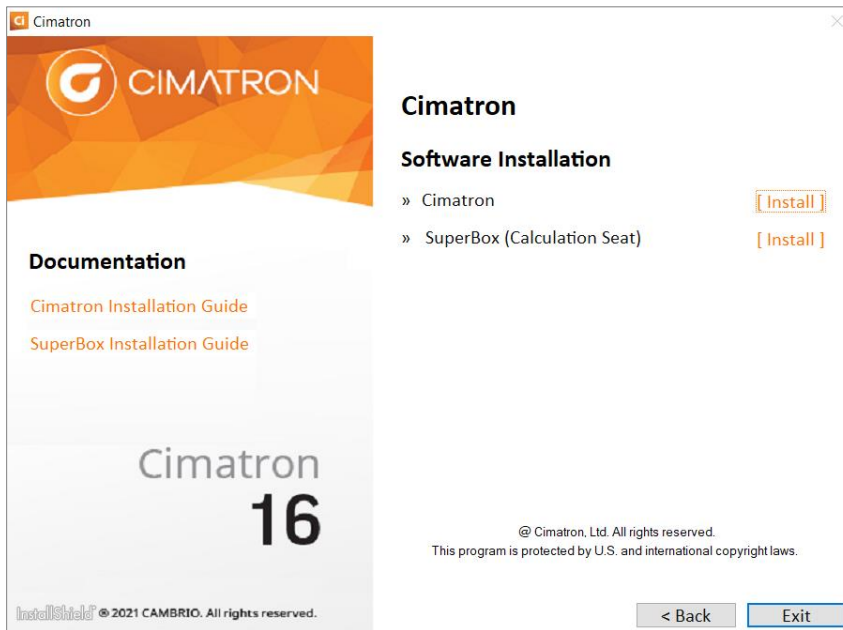
1. Close all other applications.
2. Insert the Cimatron installation media into the computer.

Note: The entire Cimatron installation may also be downloaded or copied to your computer.

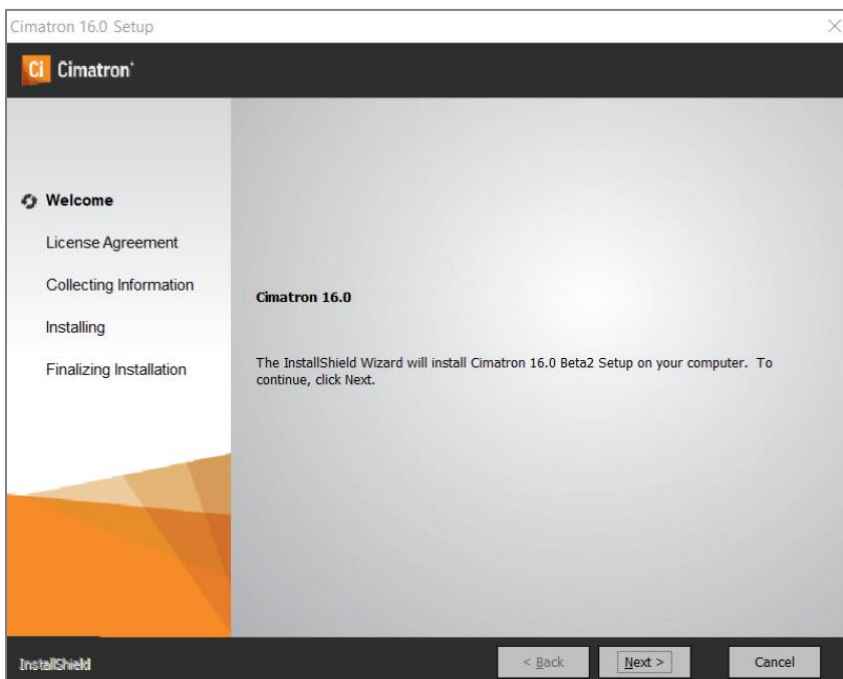
3. The Cimatron installation menu (Autorun) is displayed. Click on the **Cimatron** item.



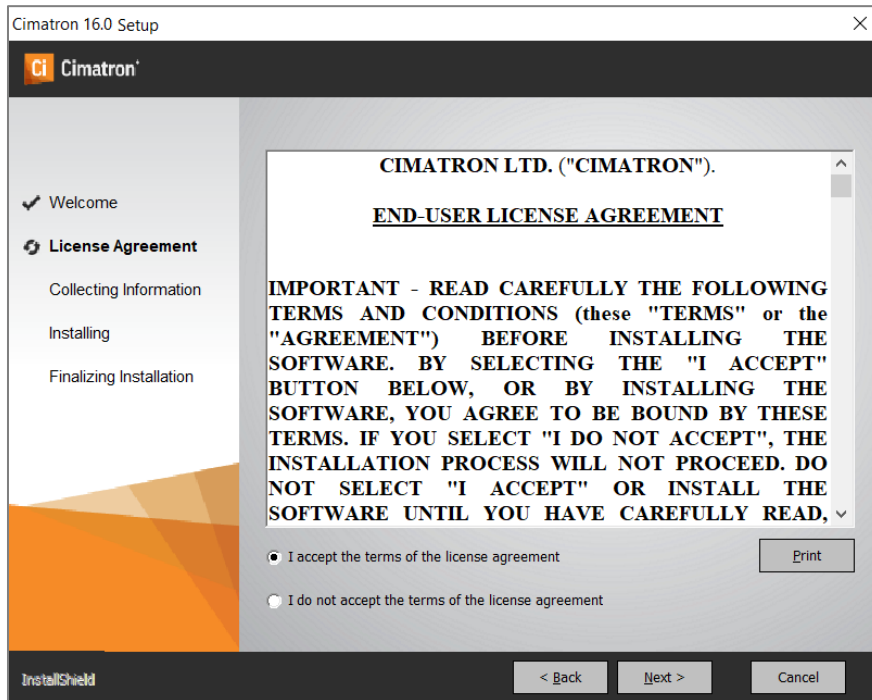
- The Software Installation dialog is displayed. Navigate to the software you want to install (**Cimatron**) and click **Install**.



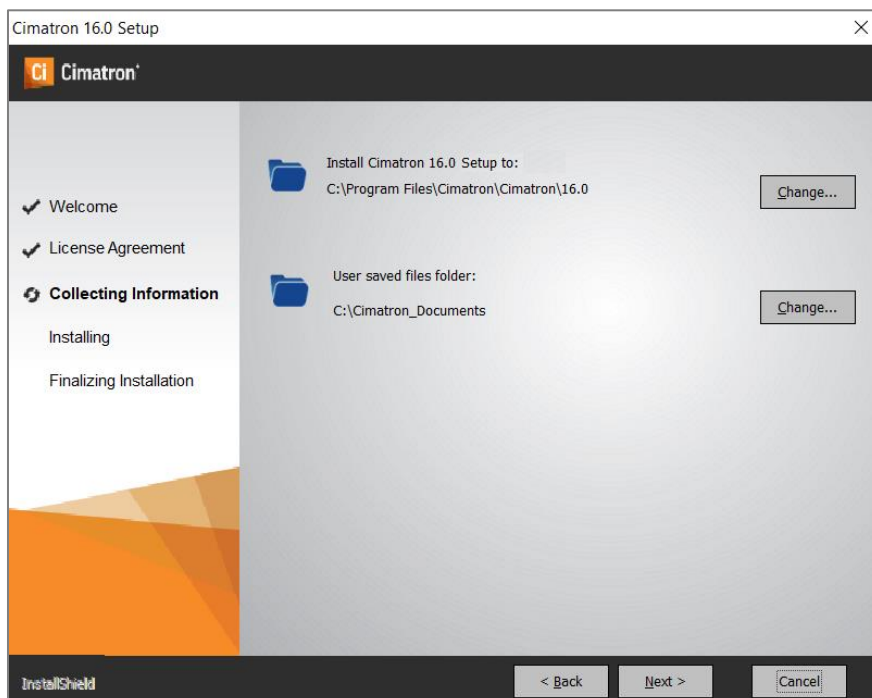
- The installation program runs automatically; proceed according to the Installation Wizard instructions.
- The Welcome dialog is displayed. Click **Next**.



7. The License Agreement dialog is displayed. Read it carefully. Click **Next** to accept the terms of the license agreement.

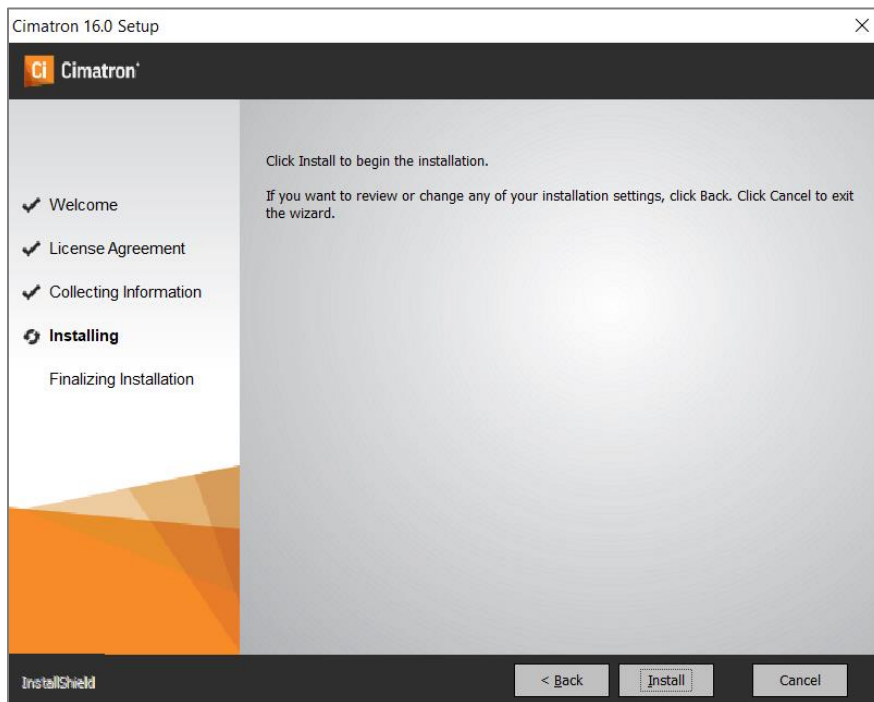


8. The Destination Folder dialog is displayed. Change the destination folders as needed or accept the default locations. Click **Next**.

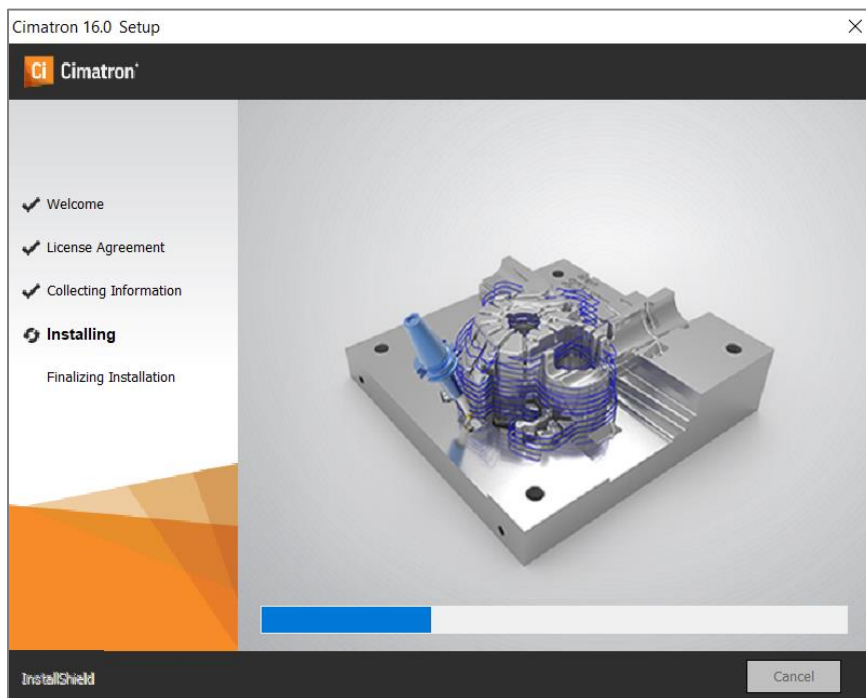


Important Note! Do not use spaces in any directory names (xxx yyy); use underscores instead (xxx_yyy). Cimatron does not support names with spaces.

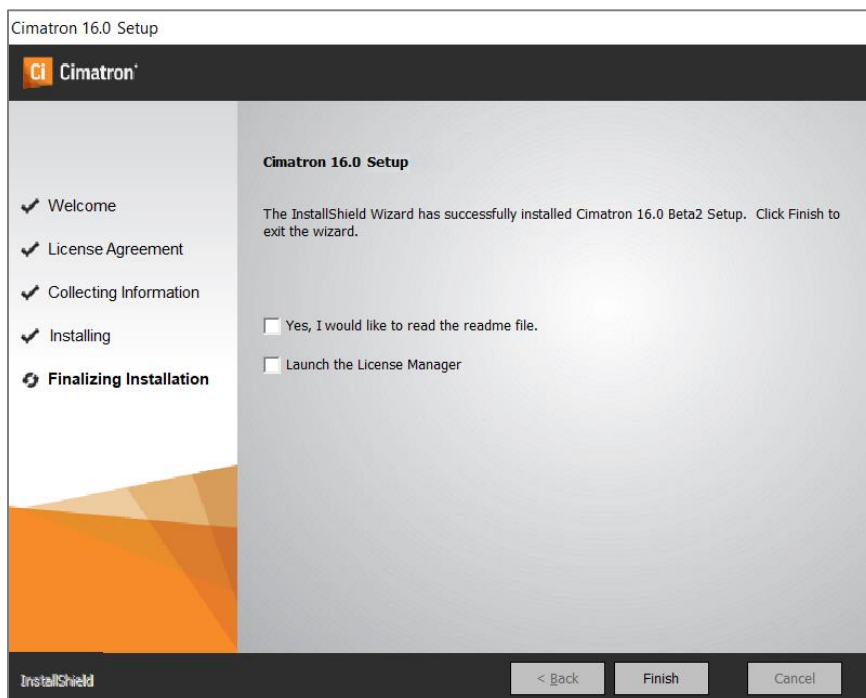
9. The components are now ready to be installed as indicated by the Ready to Install dialog. Click **Install**.



10. The installation process begins.



11. When the installation is complete, we recommend that you read the Readme file. Click **Finish** to exist the installation procedure.



Note: If you have the license file, enter the Local License Folder at this stage. However, if you have not yet received the license file, it is still possible to continue and finish the installation. Later, it will be possible to set the license information using the License Manager tool the first time Cimatron runs or from the Cimatron Control Panel (see the License Guide).

Installation Stages

The installation program installs the following software first, prior to installing Cimatron; these items are a prerequisite for the continuation of the installation:

- .NET Environment
- Microsoft Visual C++ Redistributables

Note: During this stage of the installation, the system may require a restart.

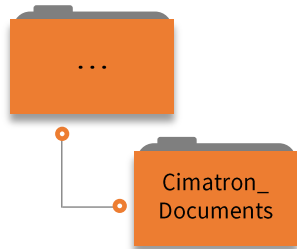
The Cimatron installation stages are as follows.

- Checks if the user running the installation has Administrator rights.
- Recognizes the existing Cimatron versions on the computer (if any) and chooses the proper installation scenario: new, upgrade, or additional installation (for a new major version):
 - Upgrades (overwrites) the previous installation, which is the default and recommended mode (for the same major version).
 - Side-by-side (additional) installation to the existing version (for a new major version).
- Creates Cimatron software layout (folders and sub-folders) and copies files to it.
- Data Files:
 - Preserves relevant user-defined (newly created) and user-modified data files from previous installations.
 - Merges the preference file (CimatronE.prf), attribute template files (modeler.exl, et al.), and the attributes translation file (AttrTrnMap.xml). This only occurs for an Upgrade or an Additional installation.
- Installs the Print to PDF driver.
- Sets License Location using the License Manager (optional).
- Adjusts Cimatron software to different computer environments; for example, different operating system languages: German, Japanese, etc.
- Uninstalls Cimatron software – removes all installed files from the disk, cleans registry, and removes program group.

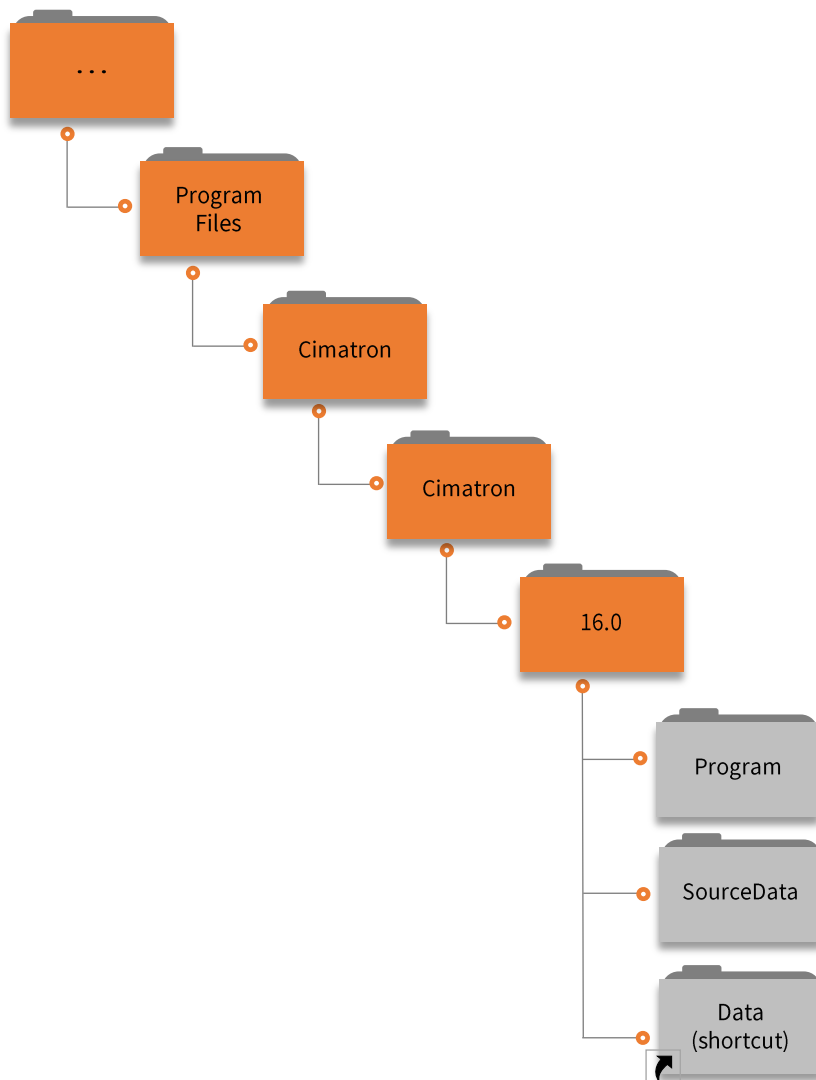
Installation Layout

The Cimatron 16 folder structure is shown below.

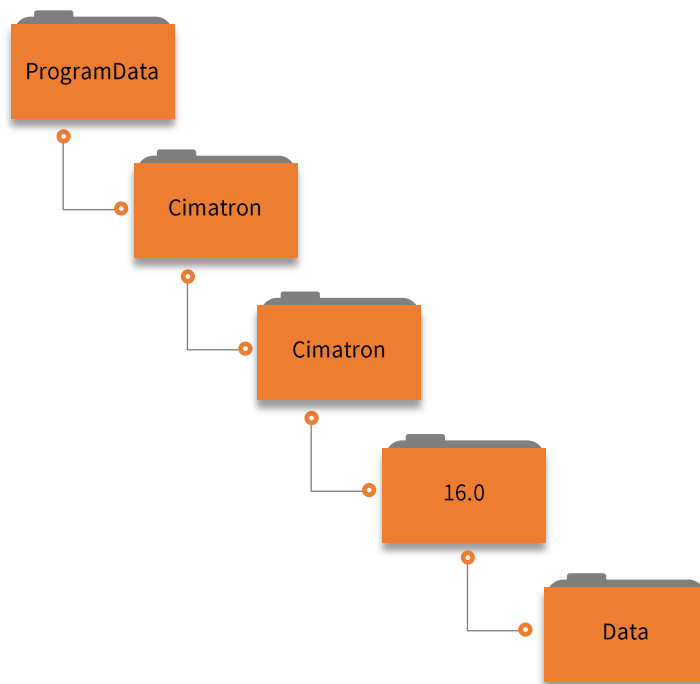
- **Cimatron Documents**



- **Cimatron Program Files**



- **Cimatron Data Folder**



The product's name and path (...\\Program Files\\Cimatron\\Cimatron) are set by default but *can* be changed; however, the location of the following sub-folders *cannot* be changed: Data, Program, SourceData, and Workarea.

During installation, you can change the location of the Cimatron_Documents folder. This is the default folder for user files.

Catalogs

Catalogs for Mold and Die parts are available on the server. New Mold and Die part catalogs can be downloaded or existing catalogs can be updated from the server.

New or updated parts are constantly released by Cimatron and uploaded to the server. Once released, the parts become immediately available for all Cimatron users and can be downloaded directly to your PC or local network.

A Cimatron provider or reseller can upload additional catalog parts to the server or upload their translated parts (these are the same parts as released by Cimatron, but with their names translated to the local language).

Installation Scenarios

Several possible installation scenarios are supported as follows.

1. **New Installation:** Install the latest Cimatron version on a clean PC.
2. **Upgrade Installation:** When installing the same major version over an existing installation, the system automatically updates the version.

Preserving User Data from a Previous Version

Preserve user-customized and user-created data files from a previous Cimatron version.

Cimatron data files (user-customized)

1. The AttrTrnMap.xml and CimatronE.prf files from Cimatron 16 are merged with user files from version 15.0 or 14.0.
2. The user-defined DI Flavors files are not overwritten.
3. Other user-customized files are treated as shown in the table below.

*In the **Installation Action** column, Upgrade Mode occurs when upgrading the current version (e.g., installing a service pack, etc.). SBS (Side by Side) installation occurs when installing a major version (e.g., Cimatron 16).*

File Name	Location	Changed in 16.0	Installation Action
AttForRemove.txt	Data	No	Upgrade Mode: Backup existing file, install new one. SBS: Install new file.
CimatronCstm.xml	Data	Yes	Created on run-time.
CimXplor.Pos Catalog.Pos DieSet.Pos FixedCollection.Pos LayoutInch.Pos LayoutMM.Pos ModalLayout.Pos MoldConfiguration.Pos NCSequence.Pos	Data	No	Install new files.
DieLoadDieSet.Pos DieLoadPunchUnit.Pos	Data	No	Install new files.
NCEnv.xml	Data	No	Upgrade Mode: Backup existing file, install new one. SBS: Install new file.

File Name	Location	Changed in 16.0	Installation Action
PostParams.xml	Data	No	Upgrade mode: Preserve the existing file. SBS: Copy file from the existing version.
Pullcommands.ini	Data	No	Upgrade Mode: Preserve existing file. SBS: Copy file from the existing version.
Symbols.rtf (special drafting symbols)	Data	No	Upgrade Mode: Preserve existing file. SBS: Copy file from the existing version.
Threads.csv	Data	No	Upgrade Mode: Backup existing file, install new one. SBS: Install new file.
Off.csv	Data\dat\Externals	No	Upgrade Mode: Backup existing file, install new one. SBS: Install new file.
CimPlot.ini	Data\Display	No	Upgrade Mode: Backup existing file, install new one. SBS: Install new file.
DisplayQuality.exl	Data\Display	No	Upgrade Mode: Backup existing file, install new one. SBS: Install new file.
MagellanSetup.ini SpaceballSetup.ini	Data\Display	No	Upgrade Mode: Preserve existing files. SBS: Copy files from the existing version.
Default.material	Data\Display\ LightsAndMaterials	No	Upgrade Mode: Backup existing file, install new one. SBS: Install new file.
HoleMarking.xml Marking.elc	Data\Hole_Marking	New	Upgrade Mode: Backup existing files and backup folder, install new ones. SBS: Backup existing files and backup folder, install new ones.
BOM_Template.csv	Data\Resource	Yes	Upgrade Mode: Merged with files from existing version. SBS: Merged with files from existing version.
Idnum.dat Sym_text.csv	Data\Resource	No	Upgrade mode: Backup existing files, install new ones. SBS: Backup existing files, install new ones.
Default.ttp	Data\templates	No	Upgrade Mode: Backup existing file, install new one. SBS: Install new file.

File Name	Location	Changed in 16.0	Installation Action
Drafting.exl NC.exl	Data\templates	No	Upgrade Mode: Preserve existing files. SBS: Copy files from the existing version.
Assembly.exl Modeler.exl	Data\templates	Yes	Upgrade Mode: Backup existing files, install new ones. SBS: Copy files from the existing version.
Document Default Templates	Data\templates\Default	No	Install new files.
*.Repx	BOM: Data\templates\Bom CMM: Data\templates\CMM Coordinate Table: Data\templates\Coordinate_Table ECO: Data\templates\ECO EDM: Data\templates\EDM_Report Measurement: Data\templates\Measuring NC: Data\Nc\OMI Data\Nc\Customized Reports	New	Upgrade Mode: Install new files. SBS: Install new files.

User-created data files

During the installation of Cimatron 16.0 (a major version), all user-created data files from a previous major version are copied to the following folder:

... \ProgramData\Cimatron\Cimatron\16.0\Data

While installing Cimatron 16, some of these files are manipulated according to pre-defined rules. For example, the CimatronE.PRF file from Cimatron 16.0 is merged into the previous CimatronE.PRF file.